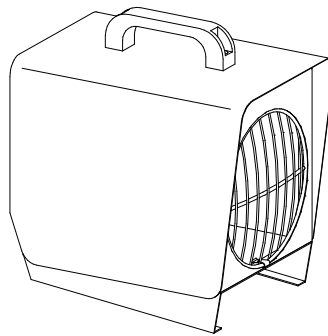




# **REMKO TX 2500 Electric Heaters**



**Operation  
Technology  
Spare Parts**

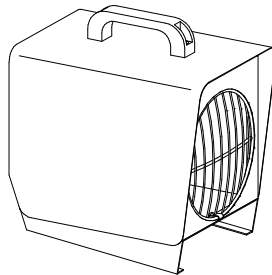


# Operating instructions

**Make sure to read these instructions carefully before starting/using the unit!**

**Our guarantee will become void when the unit supplied by us is used and installed for inadequate purposes, or maintained incorrectly, etc., or if it is changed without our prior consent.  
Subject to alterations!**

## **Mobile Electric Heaters**



### **Contents**

	Page
Safety Instructions	4
Description of device	4
Starting	4
Unit shut down	5
Troubleshooting	5

### **Contents**

	Page
Maintenance and Service	5
Technical data	6
Wiring diagram	6
Exploded view	7
Spare part list	7




**Always keep these operating instructions near or on the unit!**




# Safety Instructions

REMKO electric heaters will provide you with high utility and long life thanks to our extensive material, function and quality controls. Dangers may arise nevertheless if the unit is used by persons not familiar with its operation or if the unit is not used for its intended purpose.

- ◇ The persons charged with the operation of the units have to check these before starting work as to visible defects of the operation and safety devices, as well as to make sure that no protective devices are missing. *In the case of faults the supervisor is to be informed.*
- ◇ In the case of faults which endanger the safe operation of the units, the units are to be stopped!
- ◇ During the operation of the units the applicable local regulations are to be observed and the relevant safety measures to be taken.
- ◇ Make sure that the prescribed safety distances from combustible objects are observed!
- ◇ A free air suction and air discharge must be ensured.
- ◇ The blow off opening of the unit may not be narrowed or equipped with hoses or conduits.
- ◇ Never place foreign objects into the unit.
- ◇ Do not cover the units during operation.
- ◇ The units may not be operated near bath tubs, showers, swimming pools, etc.
- ◇ The units may not be operated directly beneath a wall socket.
- ◇ The units may not be exposed to direct water jets.
- ◇ Make sure that no water penetrates inside the units.
- ◇ The units may not be operated in rooms which are endangered by explosions.
- ◇ Protect all electric cables outside the units from damage (e.g. caused by animals).

 **Connecting cable extensions may be laid exclusively by authorised electricians based on the unit capacity, cable length and taking the local terms of use into account.**

 **The electric connection of the units is to be carried out via a special supply point with fault current safety switch.**

## Description of Device

The units are operating with electric energy and are suitable for a fully automatic, all-purpose and simple application.

The units are equipped with capsuled electrical heating elements, room thermostat, noiseless maintenance-free axial fans, safety and after-cooling thermostat, and connecting cable with plug.

The units are in accordance with the basic safety and health requirements of the relevant EC – regulation. The units are handled simply and are safe in operation.

## Application

- ◇ Drying of new buildings, spot heating of working places outside or in fire-proof halls and production places.
- ◇ Permanent or temporary heating of rooms.
- ◇ Defrosting of machines vehicles and fire-proof storing goods with keeping the prescribed distance of safety.

## Working of device

The units are equipped with a 2-stage operating switch. In the first stage the heating elements are activated and hot air is discharged.

In the 2nd stage only the supply air fan is operated and the units can be used for air circulation.

The units are operated with a room thermostat to ensure a constant room temperature. When the pre-selected temperature has been reached, the thermostat stops the heating operation to restart it when the temperature has fallen below the set value.

When the units have been switched off by the operating switch or the room thermostat, the supply air fan continues running for a certain time to cool down the heat exchanger, and then it stops automatically.

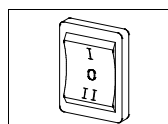
If the temperature at the blower aperture rises above 70° C the heating operation is stopped and will restart after the cooling-down period automatically.

 **For optimum unit operation, the device should not be operated at an ambient temperature above 25 °C.**

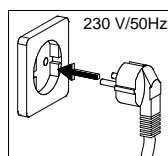
## Starting

A well trained person is to be charged with the operation and control of the units.

1. Check the main voltage is in accordance with the unit voltage.  
230V / 1~, N, PE / 50 Hz.  
Fuse protection 16 A (inert).



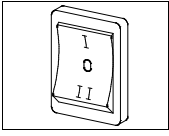
1. Put operating switch into position "0". (off)



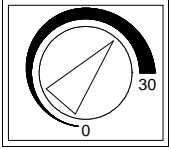
2. Connect the unit-plug to an adequate mains socket.

## Heating

The unit runs fully automatically and is dependent on set temperatures.



1. Put operating switch into position "I". (= heating).



2. Pre-select desired room temperature on the room thermostat.

## Ventilation

In this position only the supply air fan runs. The thermostatic regulation and the heating operation is not possible


Put operating switch into position "II". (= ventilation).

## Unit Shut Down

Put operating switch into position "0". (off)

### Attention, important hints to the after-cooling phase.

- ◇ The air supply fan continues running to cool down the unit and then stops later.  
*Fan can start several times before final switching off.*
- ◇ Never interrupt (except in emergency situations) the connection to the mains before the end of the whole after-cooling phase.

 **Our guarantee does not cover damages caused to the unit by overheating.**

## Troubleshooting

### Unit (fan) does not start:

1. Check main fuse
2. Check connecting cable with plug
3. Check operating switch
4. Check slight drifting of fan (motor)


### Unit does not heat:

1. Check operating switch
2. Check function of the temperature limiter
3. Check thermostat-operation: thermostat must be set higher than the room temperature
4. Check room thermostat

Should the unit still not be working despite these checks, please contact an authorised service centre.


## Maintenance and Service


Regular maintenance and the observation of some basic principles is important to ensure a long service life and a trouble-free operation of the unit.

 **Prior to starting any work make sure to pull the mains plug out of the mains socket!**



Please pay attention to the following points:

- ◇ The unit is to be maintained and cleaned in regular intervals.
- ◇ The unit is to be kept free from dust and other deposits and is to be cleaned only with a dry or humid cloth.  
*Do not use water jet.*
- ◇ Do not use any aggressive cleaning agents or those which are harmful or environmentally unfriendly.
- ◇ Do not use cleaning agents which contain solvents.
- ◇ Only use suitable cleaning agents to remove extreme dirt.
- ◇ Check safety devices regularly.  
Check protective suction and blower grids regularly and clean, when necessary.
- ◇ Do not damage the sensor and capillary tube of the thermostat when the rear panel is installed or removed.
- ◇ According to the terms of use the units are to be checked as to their perfect operation by an expert when necessary, but at least once a year.
- ◇ Please carry out an electrical safety test after having finished service on the unit.

 **Please carry out an electrical safety test after having finished service on the unit.**

 **Setting and maintenance is to be carried out only by authorised experts!**

Any claims under guarantee regarding materials can be accepted only when the orderer or his customer has filled in completely the "guarantee certificate" which is enclosed with every REMKO-heater and has returned it to REMKO GmbH & Co. KG in due time after the unit's sale and commissioning.

 **An operation/use other than that indicated in these instructions is prohibited!**  
 **In the case of non-observation we will not be held responsible and our guarantee will become void.**

### Correct usage

The units are to be used only for heating and ventilation purpose in industrial or commercial application because of their construction and equipment.

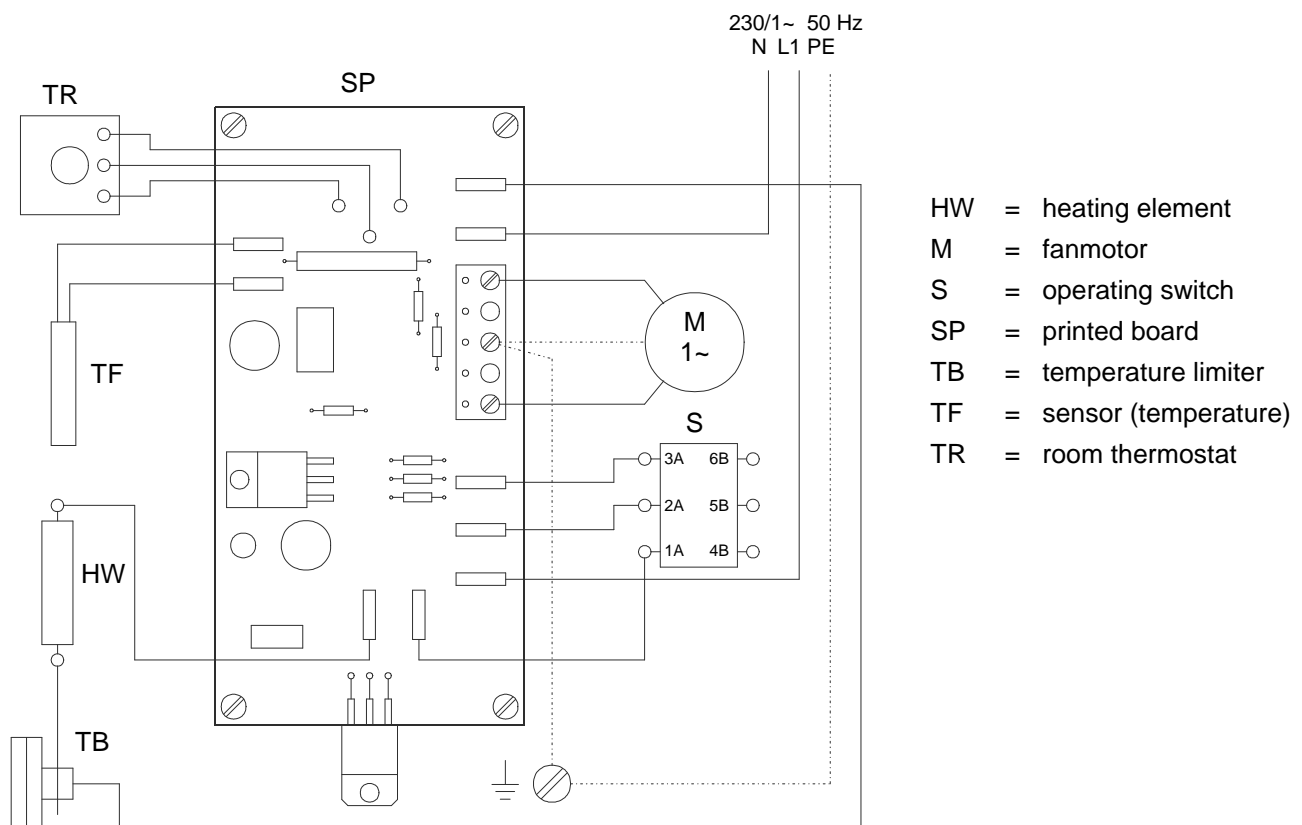
If specification of the manufacturer or legal regulations, are not followed or if unauthorised changes are made on the unit, the manufacturer is not liable for resulting damages.

# Technical Data

Series	TX 2500		
Nominal heat output	kW	2,2	
Air output	m <sup>3</sup> /h	250	
Blow-out temperature	°C	82	
Electrical connection	V	230/1~	
Frequency	Hz	50	
Rated current	A	9,5	
Power consumption max.	kW	2,25	
Fuse protection (required)	A	16 (inert)	
Sound pressure level L <sub>pA</sub> 1m <sup>2</sup> )	dB (A)	45	
Dimensions	Length	mm	300
	Width	mm	200
	Height	mm	315
Weight	kg	6,0	

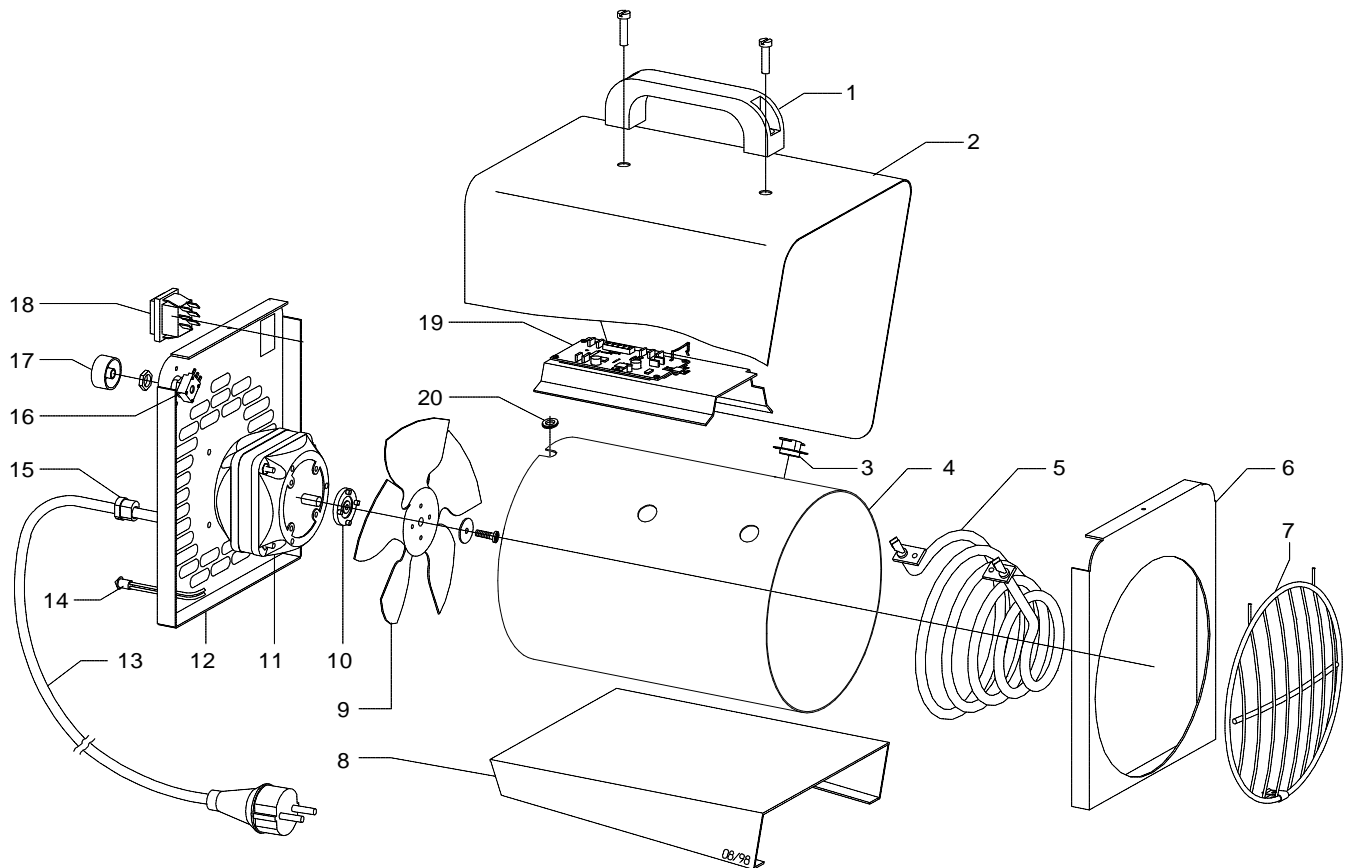
1) noise measuring DIN 45635 - 01 - KL 3

# Wiring Diagram



We reserve the right to make modifications in dimensions and construction in the interests of technical progress.

# Exploded View



# Spare Part List

Nr.	Bezeichnung	EDV-Nr.
1	transport handle	1103903
2	outside casing	1103930
3	temperature limiter	1103906
4	inside casing	1103931
5	heating element	1103909
6	front panel	1103910
7	discharge protection grille	1103803
8	base plate	1103932
9	fan blade	1103819
10	clutch plate	1103912
11	fan motor	1103820
12	rear panel	1103933
13	connecting cable with plug	1101320
14	sensor (temperature)	1103934
15	traction relief	1103904
16	thermostat	1103935
17	adjusting knob	1103936
18	operating switch, cpl.	1101188
19	printed board	1103937
20	protection socket	1101304

We reserve the right to make modifications in dimensions and construction in the interests of technical progress.

**REMKO GmbH & Co. KG**  
Klima- und Wärmetechnik

D-32791 Lage • Im Seelenkamp 12  
D-32777 Lage • PO Box 1827  
Phone +49 (5232) 606 - 0  
Fax +49 (5232) 606260