

REMKO RK

Dry dirt and water vacuum cleaners

Operation · Technology · Spare parts



Contents

<i>Safety notes</i>	3
<i>Unit description</i>	3
<i>Commissioning</i>	3
<i>Shutdown</i>	4
<i>Care and maintenance</i>	4
<i>Information on special accessories</i>	5
<i>Exploded view of RK 26</i>	6
<i>Spare parts list for RK 26</i>	7
<i>Exploded view of RK 45</i>	8
<i>Spare parts list for RK 45</i>	9
<i>Exploded view of RK 55</i>	10
<i>Spare parts list for RK 55</i>	11
<i>Exploded view of RK 75</i>	12
<i>Spare parts list for RK 75</i>	13
<i>Customer service and guarantee</i>	14
<i>Environmental protection and recycling</i>	14
<i>Intended use</i>	14
<i>Technical data</i>	15



Carefully read this operating manual prior to commissioning / using the units!

These instructions are an integral part of the unit and must always be kept in the vicinity of the installation location or on the unit itself. This operating manual is a translation of the German original.

Subject to modifications; no liability accepted for errors or misprints!

Safety notes

Always observe the respective local building code and fire prevention guidelines as well as the guidelines of the accident prevention and insurance associations when using the units.

The units have been subjected to extensive material, functional and quality inspections prior to delivery. However, dangers can arise from the units if they are used improperly or not as intended by untrained personnel!

It is essential that you comply with the following safety precautions to prevent personal injury or damage to property.

- The personnel tasked with operating the units must check the units for visible defects on the operating and safety devices as well as the presence and function of the protective devices prior to starting work
- In the event of defects that endanger the operational safety of the unit, operation must be discontinued immediately
- Before switching the unit on, check that the grid voltage is consistent with the voltage stated on the name plate
- Ensure that the power supply is safeguarded by a fuse of at least 10A of rated current (16A for RK 75)
- Do not damage the mains power cable by running over or crushing it
- Check the mains power cable regularly for signs of damage or ageing.

- Only use cables of type H05VV-F 3G 0.75 mm² (RK 75 H05VV-F 3G 1.5 mm²) if the mains power cable needs to be replaced
- Disconnect the mains plug from the socket before carrying out maintenance or servicing work
- The units must not be used to vacuum dust that is hazardous to health
- Vacuuming explosive materials, potent acids or solvents is not permitted
- The units must not be operated in potentially explosive environments
- The units must not be covered during operation
- The units must not be exposed to direct jets of water e.g. **pressure washers etc.**

CAUTION

Never vacuum explosive liquids and dusts or flammable gases and solvents.

CAUTION

Improper use shall invalidate any guarantee claims.

Unit description

The units RK 26 and RK 26-K are portable and to be used exclusively for dry dirt cleaning.

The units RK 45, RK 55 and RK 75 are dry dirt and water vacuum cleaners for industrial applications.

The units are operated exclusively with electric power and have been designed in such a way that they can be used universally and in a straightforward manner.

The units are equipped with specially enclosed, low-maintenance turbines and a power cable with protective contact plug.

The units conform to the fundamental health and safety requirements of the appropriate EU stipulations.

The units are dependable and offer ease of operation.

The units may be used among other things for the following:

- Wet and dry cleaning of floor and wall surfaces in residential and commercial areas
- Cleaning boilers (RK 26-K with boiler cleaning set only)
- Cleaning construction sites
- Cleaning vehicles
- Cleaning machinery
- Cleaning buildings
- Cleaning workshops

Commissioning

Carry out the following steps to put the unit into operation.

1. Connect the hand tube to the suction accessories required for the intended application.
2. Connect the suction hose to the container.
3. Make sure that the all-purpose dirt filter and any additional filters are inserted correctly.
4. Check that the fasteners are locked securely.
5. Plug the mains power cable to a socket that has been correctly and adequately fused.
6. Switch the vacuum cleaner on by pressing the operating switch on the motor head.
7. On the RK 75, you can also switch on the second power stage, if required.

Dry dirt cleaning

1. Release the fasteners on the side of the container and remove the motor head.
2. If necessary, empty the container.
3. Dry the container if it is damp on the inside.
4. Insert the (clean) all-purpose dirt filter.
6. If required, insert an additional fine dust paper filter for vacuuming fine dust. *Available as a special accessory.*

Wet cleaning

RK 45, RK 55 and RK 75 only

1. Release the fasteners on the side of the container and remove the motor head.
2. Remove the all-purpose dirt filter and, if necessary, the fine dust paper filter or the filter bag.
3. Empty all of the dry suction matter out of the container.
4. Always use a nylon insertion filter.
Nylon insertion filters for wet operation are available as special accessories.
5. Always empty the container immediately after completing the cleaning operation.
6. Wipe down the container with a dry cloth after it has been emptied.
7. Keep in mind that a built-in flotation valve cuts off the airflow when the maximum permissible fill level has been reached.
The unit has no suction capacity and needs to be emptied.

Shutdown

1. Switch off the unit and pull out the mains plug.
2. Remove the motor head and clean the container and all filters.
3. Then clean the vacuum cleaner and suction accessories and check the unit for any damage.
4. Put the unit back together and store it in a dry and clean location.

Care and maintenance

Regular care and observation of some basic requirements will ensure trouble-free operation and a long service life of the units.



CAUTION

Before undertaking any work on the units, the power plug must be removed from the mains socket.

- Whenever the container is emptied, relieve the all-purpose dirt filter of accumulated dirt by tapping it firmly or purging it with compressed air
- Keep the units free of dust and other debris
- Only clean the units with a dry or moistened cloth
- Never subject to direct jets of water.
e.g. pressure washers etc.
- Never use abrasive or solvent-based cleaners
- Check the safety equipment and protective devices on a regular basis
- In accordance with the operating conditions, the units must, if necessary, be checked at least yearly by a specialist to ensure that they are in a condition that is safe to use
- Replace the all-purpose dirt filter every 1 to 2 years, depending on how the unit is used



CAUTION

After completing any work on the unit, an electrical inspection must be carried out according to VDE 0701.

Information on special accessories

There have been several misunderstandings when customers have ordered spare parts for REMKO dry dirt and REMKO dry dirt and water vacuum cleaners. Amongst other items, customers have confused filter bags and fine dust paper filters. Both paper filter variants provide additional filtering of fine dust and serve to extend the service life of the standard all-purpose dirt filter. Please observe the following notes.

All-purpose dirt filter (standard)

All-purpose dirt filters are high-volume textile fabric filters that are to be used exclusively for dry dirt applications. They serve to filter the suction matter and can be found in all vacuum cleaners as standard.



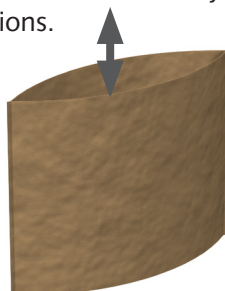
For wet applications, they must be removed and, if necessary, replaced with an insertion filter made of nylon (accessory). If necessary, the all-purpose dirt filters can be cleaned (using a dry method wherever possible) and re-used. For hygiene and safety reasons, replace the all-purpose dirt filter every 1 to 2 years, depending on how the unit is used.

Order no. / EDP no.:

RK 26	1336035
RK 45	1336036
RK 55	1336036
RK 75	1336038

Fine dust paper filter (accessory)

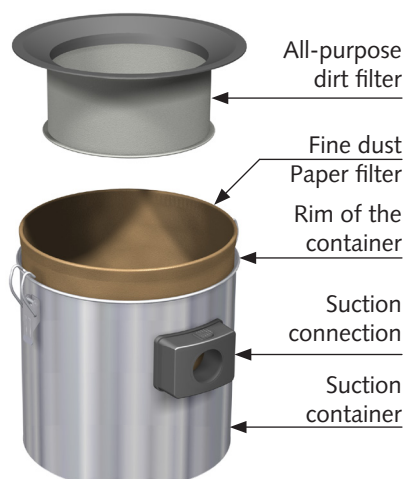
Fine dust paper filters are paper bags that are open at the top. They are inserted into the suction container and used for dry dirt applications.



They provide additional filtering and can be used over a long period of time. The suction matter continues to be collected in the suction container rather than in the fine dust paper filter.

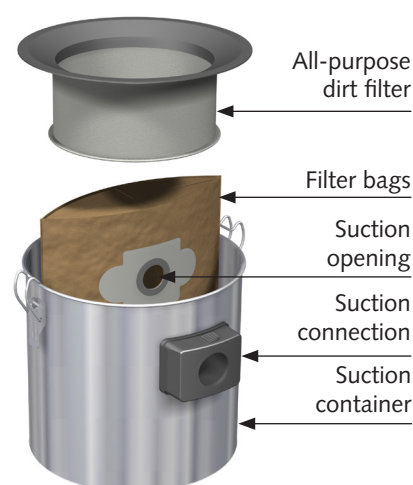
Inserting the fine dust paper filter

1. Remove the entire top section and the all-purpose dirt filter.
2. Prise the fine dust paper filter open and place it into the suction container.
3. Fold approx. 2 cm of the top edge over and pull it over the rim of the container.
4. Insert the cleaned all-purpose dirt filter and re-attach the top part.



Filter bags (accessories)

Filter bags are paper containers that are closed on all sides. They are used for dry dirt applications and are placed on the suction connection on the inside of the suction container. They are only to be used once, are sealable and must be disposed of correctly when full.

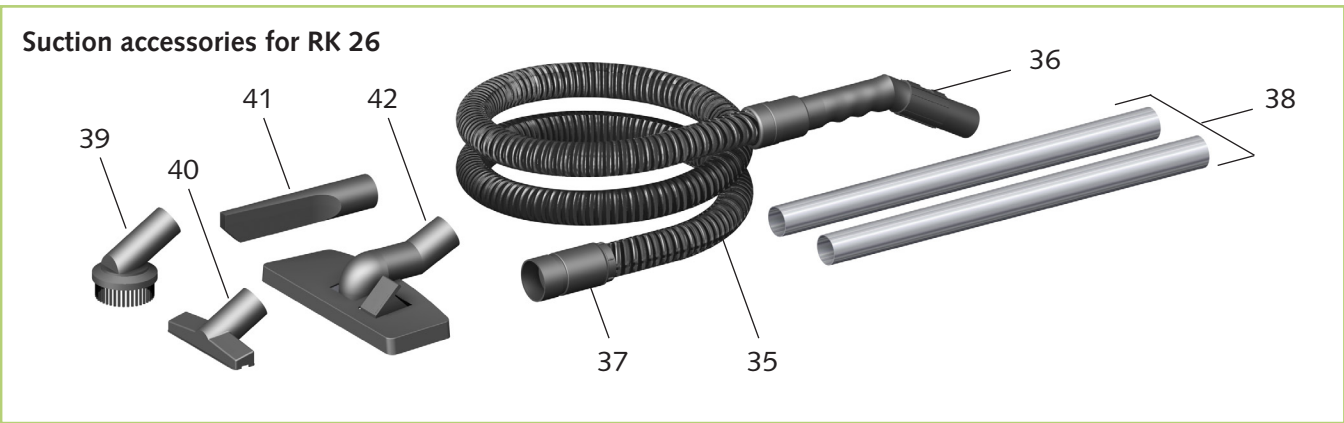
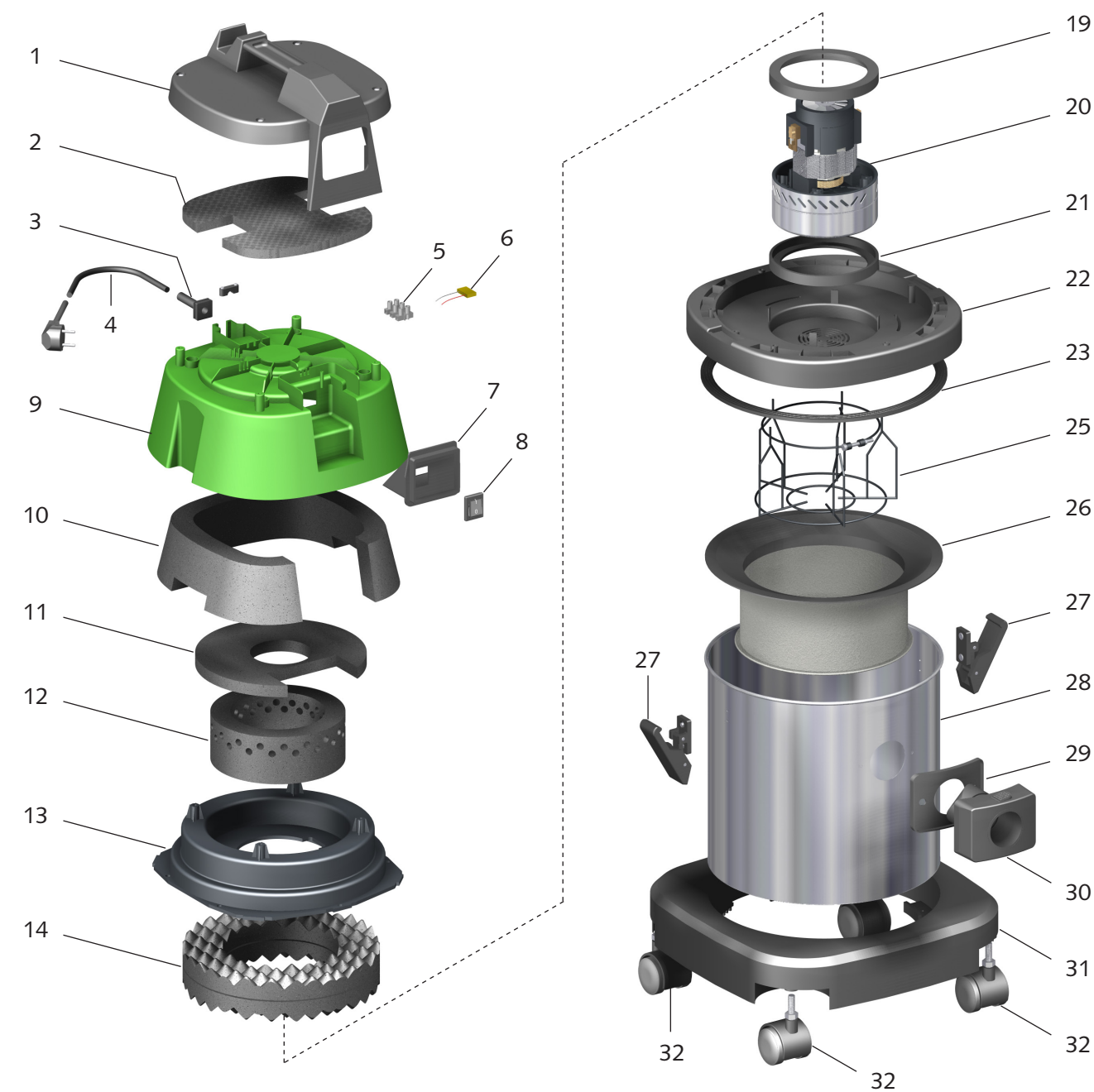


1. Remove the entire top section and the all-purpose dirt filter.
2. Prise the filter bag apart slightly and push the opening onto the suction nozzle from the inside.
3. Keep in mind that the filter bags for type RK 45 are inserted horizontally (fig.) and the filter bags for type RK 26 and 55 are inserted vertically (not shown).
4. Insert the cleaned all-purpose dirt filter and re-attach the top part.

NOTE

*Always replace paper filters in good time.
Paper filters that are overly full can burst.*

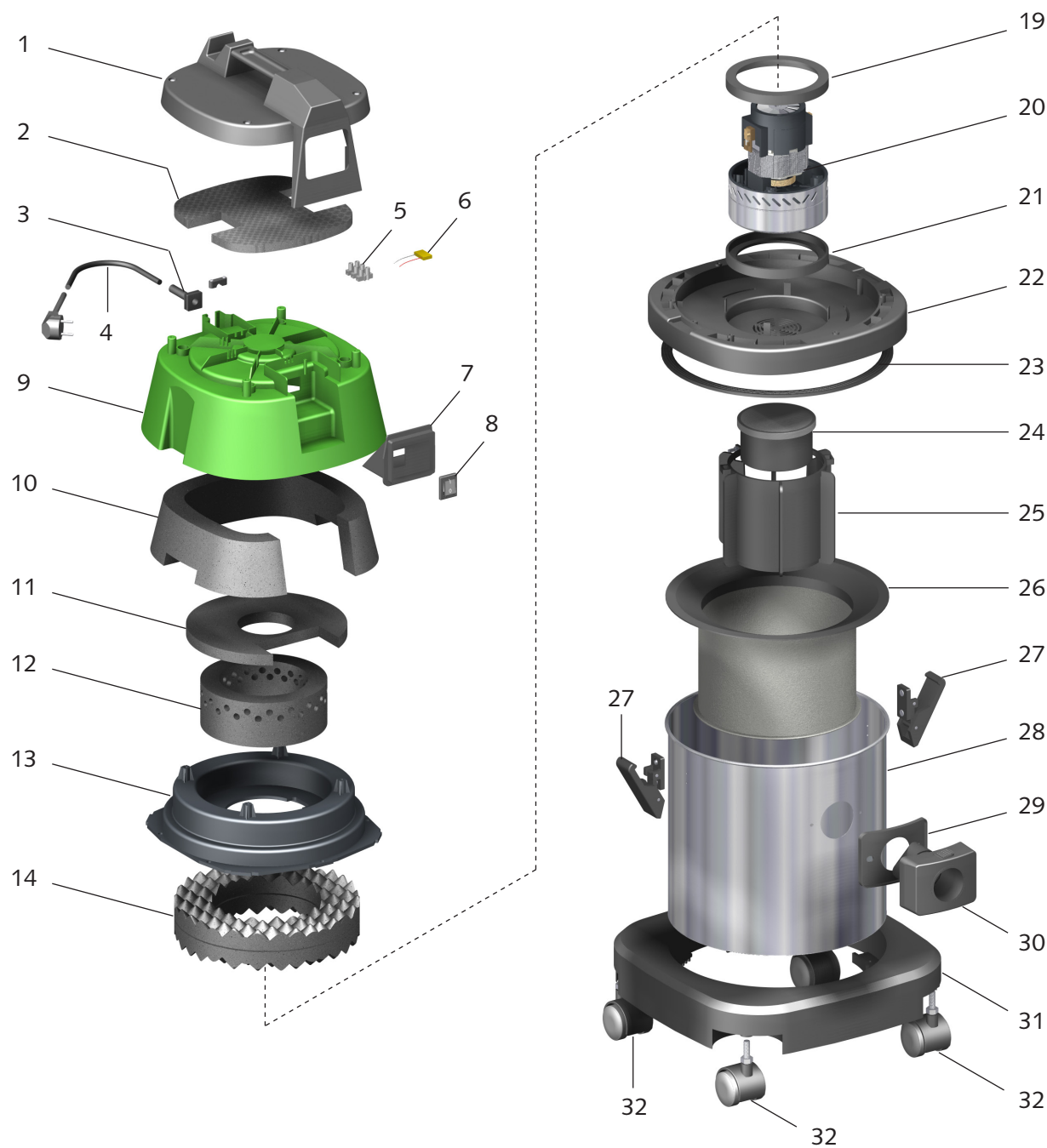
Exploded view of RK 26



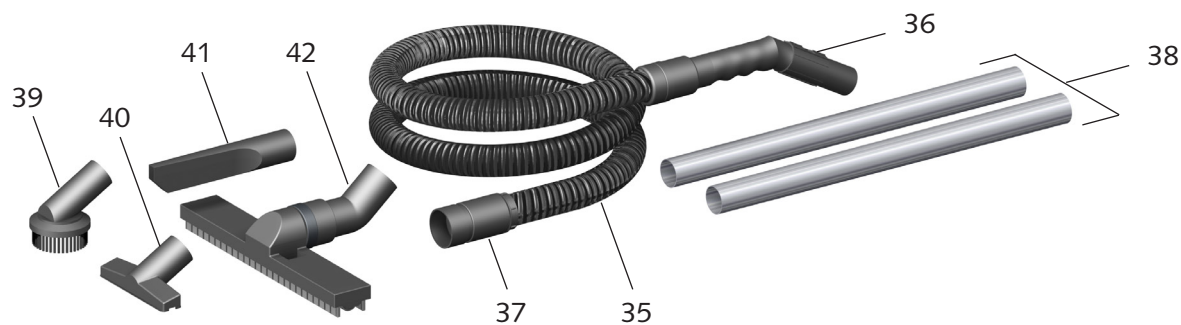
Spare parts list for RK 26

No.	Designation	EDP no.
1	Protective cover	1111300
2	Sound absorber	1104165
3	Anti-kink cable protection	1104107
4	Mains cable with plug	1111301
5	Terminal block	1111302
6	Condenser	1104134
7	Switch housing	1111303
8	Operating switch	1104105
9	Turbine cover	1111304
10	Motor insulation ring	1111305
11	Sound absorber	1104159
12	Turbine insulation	1104166
13	Air deflection plate	1111306
14	Insulation ring	1104160
19	Motor gasket, top	1104112
20	Turbine assembly	1111308
21	Motor gasket, bottom	1111307
22	Turbine carrier	1111309
23	Turbine carrier seal	1104114
25	Filter cage	1111310
26	All-purpose dirt filter	1336035
27	Fastener	1111311
28	Container	1111312
29	Suction piece seal	1104120
30	Suction piece	1111318
31	Bearer ring	1111313
32	Castor	1111314
35	Suction hose assembly (36 Ø)	1336011
36	Elbow at hand tube end (36 Ø)	1336023
37	Connecting piece at vessel end (36 Ø)	1336022
38	Suction and hand tube, 2-part, straight (36 Ø)	1336021
39	Round end brush (36 Ø)	1340070
40	Conventional floor nozzle (36 Ø)	1336060
41	Crevice nozzle (36 Ø)	1336050
42	Multi-purpose floor nozzle	1336030
Not shown Carbon brushes (set)		1336033

Exploded view of RK 45



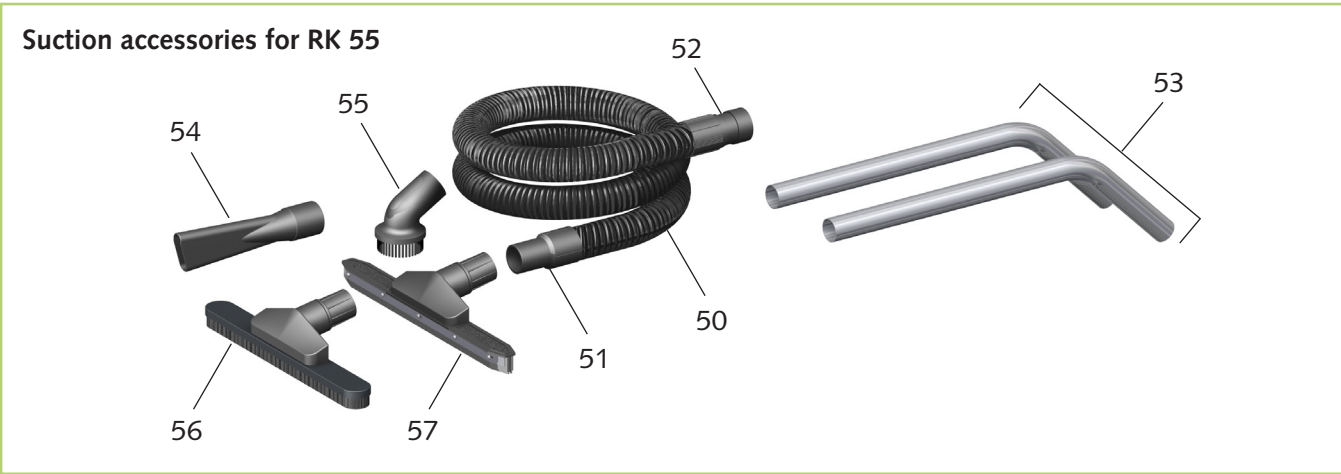
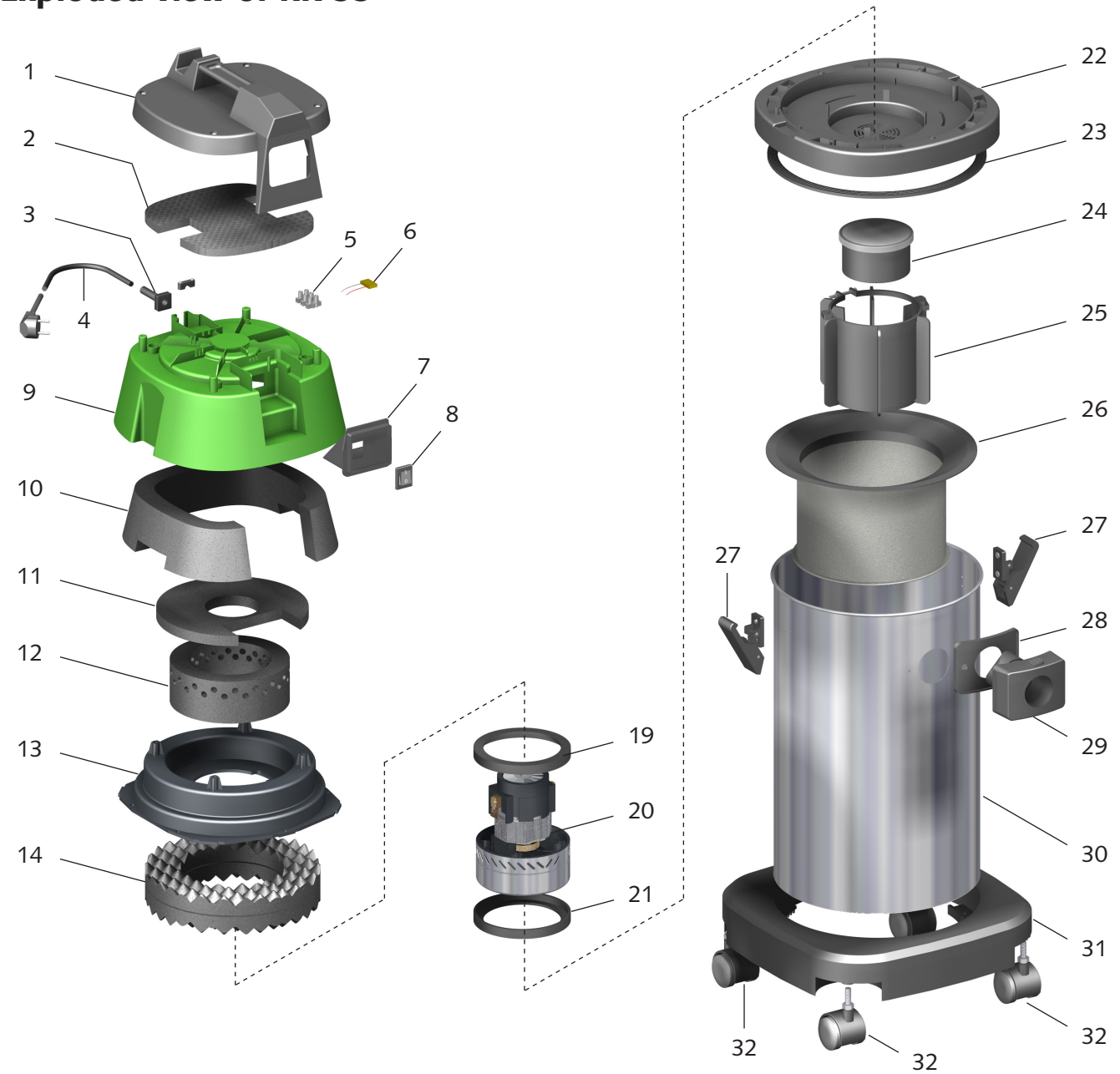
Suction accessories for RK 45



Spare parts list for RK 45

No.	Designation	EDP no.
1	Protective cover	1111300
2	Sound absorber	1104165
3	Anti-kink cable protection	1104107
4	Mains cable with plug	1111301
5	Terminal block	1111302
6	Condenser	1104134
7	Switch housing	1111303
8	Operating switch	1104105
9	Turbine cover	1111304
10	Motor insulation ring	1111305
11	Sound absorber	1104159
12	Turbine insulation	1104166
13	Air deflection plate	1111306
14	Insulation ring	1104160
19	Motor gasket, top	1104112
20	Turbine assembly	1111308
21	Motor gasket, bottom	1111307
22	Turbine carrier	1111309
23	Turbine carrier seal	1104114
24	Float	1111315
25	Filter cage	1111316
26	All-purpose dirt filter	1336036
27	Fastener	1111311
28	Container	1111312
29	Suction piece seal	1104120
30	Suction piece	1111318
31	Bearer ring	1111313
32	Castor	1111314
35	Suction hose assembly (36 Ø)	1336011
36	Elbow at hand tube end (36 Ø)	1336023
37	Connecting piece at vessel end (36 Ø)	1336022
38	Suction and hand tube, 2-part, straight (36 Ø)	1336021
39	Round end brush (36 Ø)	1340070
40	Conventional floor nozzle (36 Ø)	1336060
41	Crevice nozzle (36 Ø)	1336050
42	Water suction nozzle (36 Ø)	1336100
Not shown Replacement water suction lip (set)		1336034
Not shown Carbon brushes (set)		1336033

Exploded view of RK 55

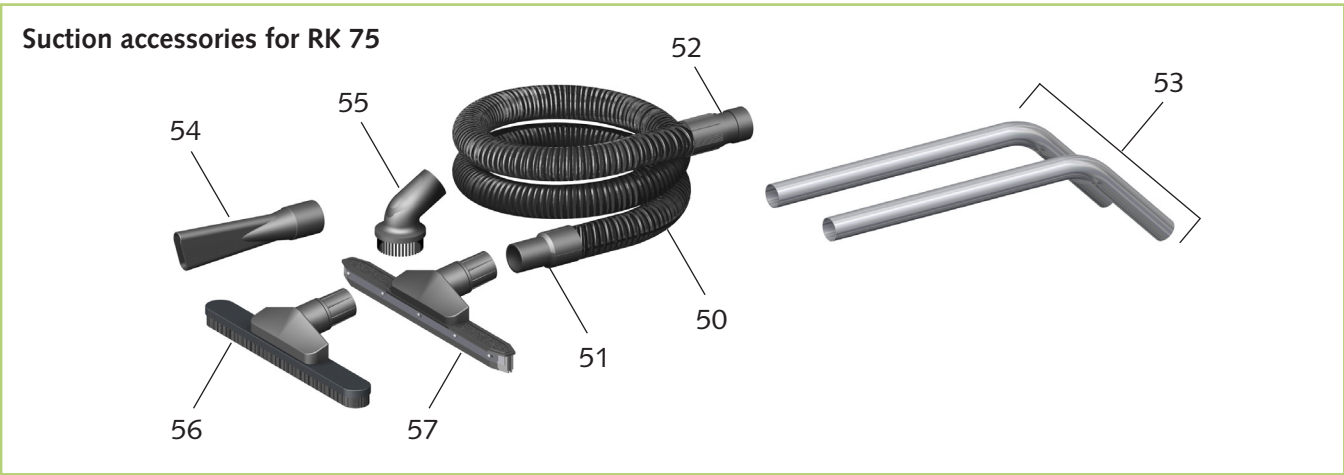
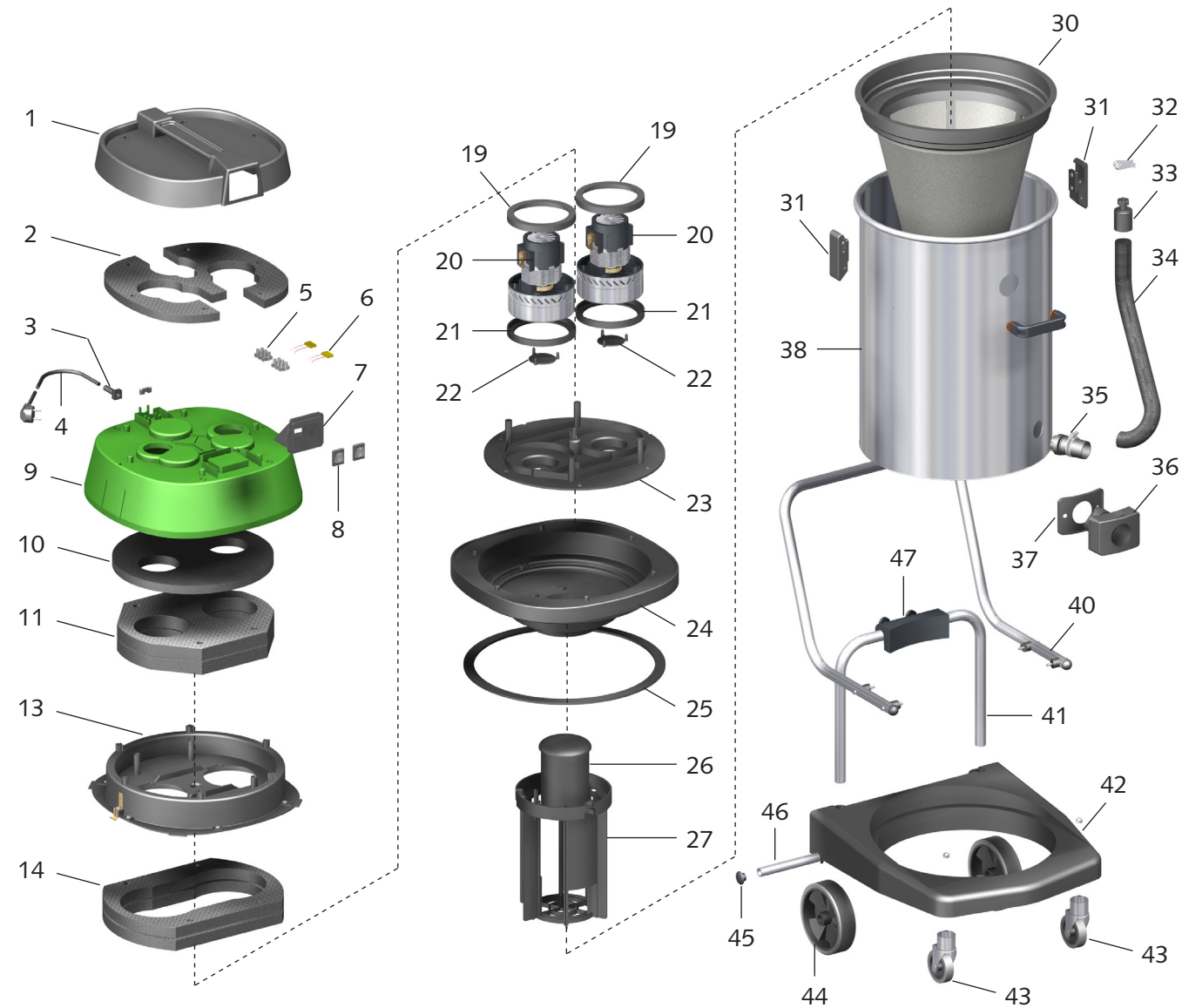


Spare parts list for RK 55

No.	Designation	EDP no.
1	Protective cover	1111300
2	Sound absorber	1104165
3	Anti-kink cable protection	1104107
4	Mains cable with plug	1111301
5	Terminal block	1111302
6	Condenser	1104134
7	Switch housing	1111303
8	Operating switch	1104105
9	Turbine cover	1111304
10	Motor insulation ring	1111305
11	Sound absorber	1104159
12	Turbine insulation	1104166
13	Air deflection plate	1111306
14	Insulation ring	1104160
19	Motor gasket, top	1104112
20	Turbine assembly	1111308
21	Motor gasket, bottom	1111307
22	Turbine carrier	1111309
23	Turbine carrier seal	1104114
24	Float	1111315
25	Filter cage	1111316
26	All-purpose dirt filter	1336036
27	Fastener	1111311
28	Suction piece seal	1104120
29	Suction piece	1111318
30	Container	1111319
31	Bearer ring	1111313
32	Castor	1111314
50	Suction hose assembly (40 Ø)	1340015
51	Connecting piece on hand tube end (40 Ø)	1336026
52	Connecting piece at vessel end (40 Ø)	1336028
53	Suction and hand tube, 2-part, S-shaped (40 Ø)	1314020
54	Crevice nozzle (40 Ø)	1340050
55	Round end brush (40 Ø)	1340080
56	Brush nozzle (40 Ø)	1314040
57	Water suction nozzle (40 Ø)	1314030
Not shown Replacement water suction lip (set)		1336034
Not shown Carbon brushes (set)		1336033

When ordering spare parts, please state the EDP no., unit number and type (see name plate)!

Exploded view of RK 75



Spare parts list for RK 75

No.	Designation	EDP no.
1	Protective cover	1111320
2	Sound absorber	1104182
3	Anti-kink cable protection	1104107
4	Mains cable with plug	1111321
5	Terminal block	1111322
6	Condenser	1111323
7	Switch housing	1111317
8	Operating switch	1104105
9	Turbine cover	1111324
10	Sound absorber	1104176
11	Turbine insulation	1114183
13	Air deflection plate	1104179
14	Insulation ring	1104177
19	Motor gasket, top	1104112
20	Turbine assembly	1111308
21	Motor gasket, bottom	1111307
22	Valve	1111325
23	Turbine carrier insert	1111326
24	Turbine carrier	1111327
25	Turbine carrier seal	1111328
26	Float	1111329
27	Filter cage	1111330
30	All-purpose dirt filter	1336038
31	Fastener	1111311
32	Cable strap	1111331
33	Sealing plug	1111332
34	Discharge hose	1111333
35	Discharge hose connecting piece	1111334
36	Suction piece	1111318
37	Suction piece seal	1104120
38	Container	1111335
40	Transportation bracket	1111336
41	Support bracket	1111337
42	Bearer ring	1111338
43	Castor	1111339
44	Wheel	1111340
45	End cap	1111341
46	Axle	1111342
47	Container hinge	1111343
50	Suction hose assembly (40 Ø)	1340015
51	Connecting piece on hand tube end (40 Ø)	1336026
52	Connecting piece at vessel end (40 Ø)	1336028
53	Suction and hand tube, 2-part, S-shaped (40 Ø)	1314020
54	Crevice nozzle (40 Ø)	1340050
55	Round end brush (40 Ø)	1340080
56	Brush nozzle (40 Ø)	1314040
57	Water suction nozzle (40 Ø)	1314030
Not shown Replacement water suction lip (set)		1336034
Not shown Carbon brushes (set)		1336033

Intended use

The units are designed exclusively for vacuum cleaning purposes in industrial or commercial situations on the basis of their structural design and equipment.

Vacuuming dust or liquids that are explosive or hazardous to health is not permitted.

The units must only be operated by appropriately instructed personnel.

With non-observance of the manufacturer's specifications, the respective local legal requirements or after arbitrary alterations to the units, the manufacturer shall not be liable for resulting damages.

Customer service and Guarantee

As a prerequisite for any guarantee claims to be considered, it is essential that the ordering party or their representative complete and return the **"certificate of guarantee"** to REMKO GmbH & Co. KG at the time when the units are purchased and commissioned.

The units are tested several times to verify their correct function. However, if malfunctions should arise that cannot be remedied by the operator with the assistance of the troubleshooting section, please contact your specialist dealer or contractual partner.



Environmental protection and recycling

Disposing of packaging

When disposing of packaging material, please consider our environment.

Our units are carefully packed and delivered in sturdy transport packaging made from cardboard and polystyrene.

The packaging materials are environmentally-friendly and can be recycled.

By recycling packaging materials, you make a valuable contribution to the reduction of waste and conservation of raw materials.

Therefore, only dispose of packaging material at appropriate collection points.

Disposal of the old unit

The manufacturing process for the units is subject to continuous quality control.

Only high-grade materials are processed, the majority of which are recyclable.

You also contribute to environmental protection by ensuring that your old equipment is only disposed of in an environment friendly manner.

Therefore, only bring the old unit to an authorised recycling business or to an appropriate collection point.



NOTE

Operation other than the types listed in this operating manual is prohibited.

With non-observance, any manufacturer liability or guarantee claims are voided.



NOTE

Repair and maintenance work may only be carried out by authorised and qualified technicians.



CAUTION

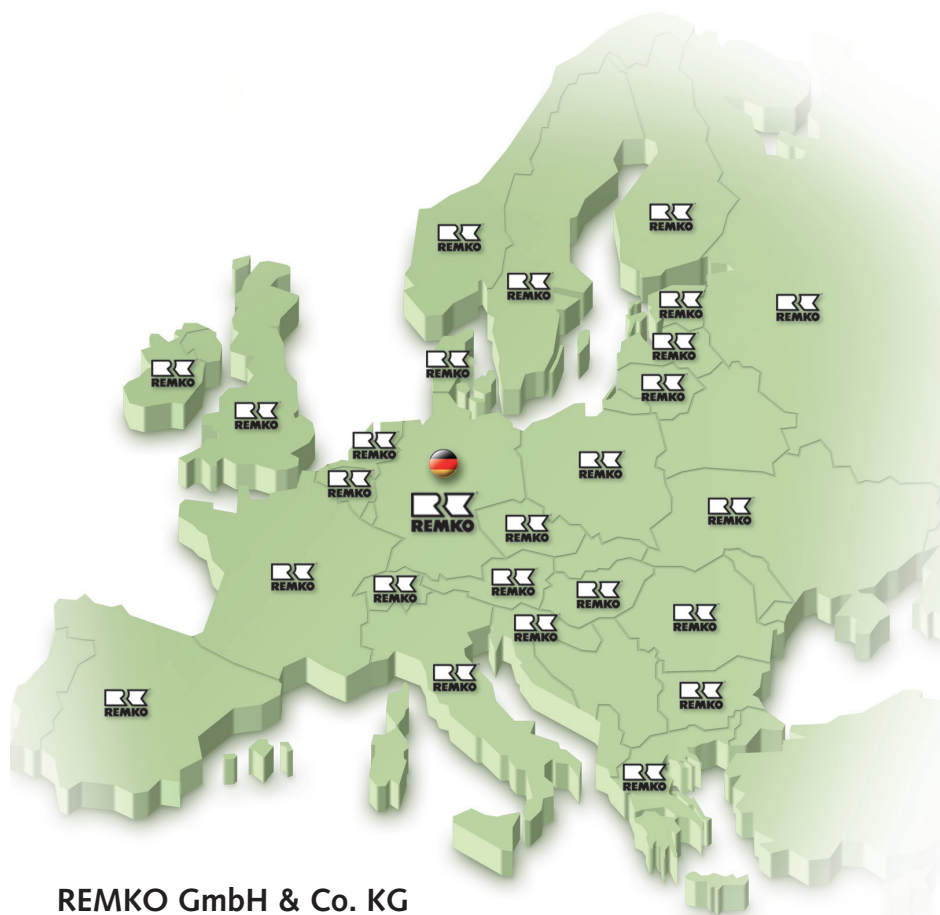
*Copyright
The redistribution, even in part, or the use of this documentation for purposes other than intended is strictly prohibited without the written authorisation of
REMKO GmbH & Co. KG
is prohibited.*

Technical data

Unit type		RK 26	RK 45	RK 55	RK 75
Unit design		Dry dirt vacuum cleaner	Dry dirt and water vacuum cleaners	Dry dirt and water vacuum cleaners	Dry dirt and water vacuum cleaners
Turbine	Pc.	1	1	1	2
Turbine output	W	1,000	1,000	1,000	2 x 1,000
Cooling		Bypass	Bypass	Bypass	Bypass
Power supply	V/Hz	230/1~/50			
Mains cable length	m	7	7	7	8
Mains cable type		H05VV-F 3G 0.75			H05VV-F 3G 1.5
Power (EN 60335-2-2)	kW	1	1	1	2
Max. rated current	A	4.6	4.6	4.6	9.2
Mains fuse (provided by the customer)	A	10	10	10	16
Suction power	mbar	210	210	230	250
Air delivery rate	L/s	48	48	53	106
Suction pipe / accessories	mm Ø	36	36	40	40
Container design		Stainless steel			
Container volume	L	15	15	30	60
Sound pressure level L _{pA}	dB (A)	68	68	68	70
Dimensions: Height	mm	575	575	755	935
Width	mm	400	400	400	510
Depth	mm	400	400	400	560
Weight without accessories	kg	9.5	10	11	22
EDP no.		1304226	1304245	1304255	1304275

REMKO INTERNATIONAL

*... and also right in your neighbourhood!
Take advantage of our experience and advice*



REMKO GmbH & Co. KG Klima- und Wärmetechnik

Im Seelenkamp 12	D-32791 Lage
Postfach 1827	D-32777 Lage
Telephone	+49 5232 606-0
Fax	+49 5232 606-260
E-mail	info@remko.de
Internet	www.remko.de

Consulting

Thanks to intensive training, our consultants are always completely up-to-date when it comes to technical expertise. This has given us the reputation of being more than just an excellent, reliable supplier: REMKO, a partner who helps to solve problems.

Sales

REMKO offers not just a well-established sales network both nationally and internationally, but also has exceptionally highly-qualified sales specialists. REMKO employees in the field are more than just sales people: above all, they must be advisers to our customers in air conditioning and heating technology.

Customer service

Our units operate precisely and reliably. However, in the event of a malfunction REMKO customer service is quickly on the scene. Our comprehensive network of experienced dealers guarantees quick and reliable service.

